



ENCOUNTERING CULTURE IN ECOSYSTEM RESTORATION:

UNDERSTANDING CULTURAL TENSIONS IN THE FLORIDA EVERGLADES AND BEYOND



Rebecca I. Garvoille

PhD Candidate, Florida International University

rgarv001@fiu.edu

June 5, 2012

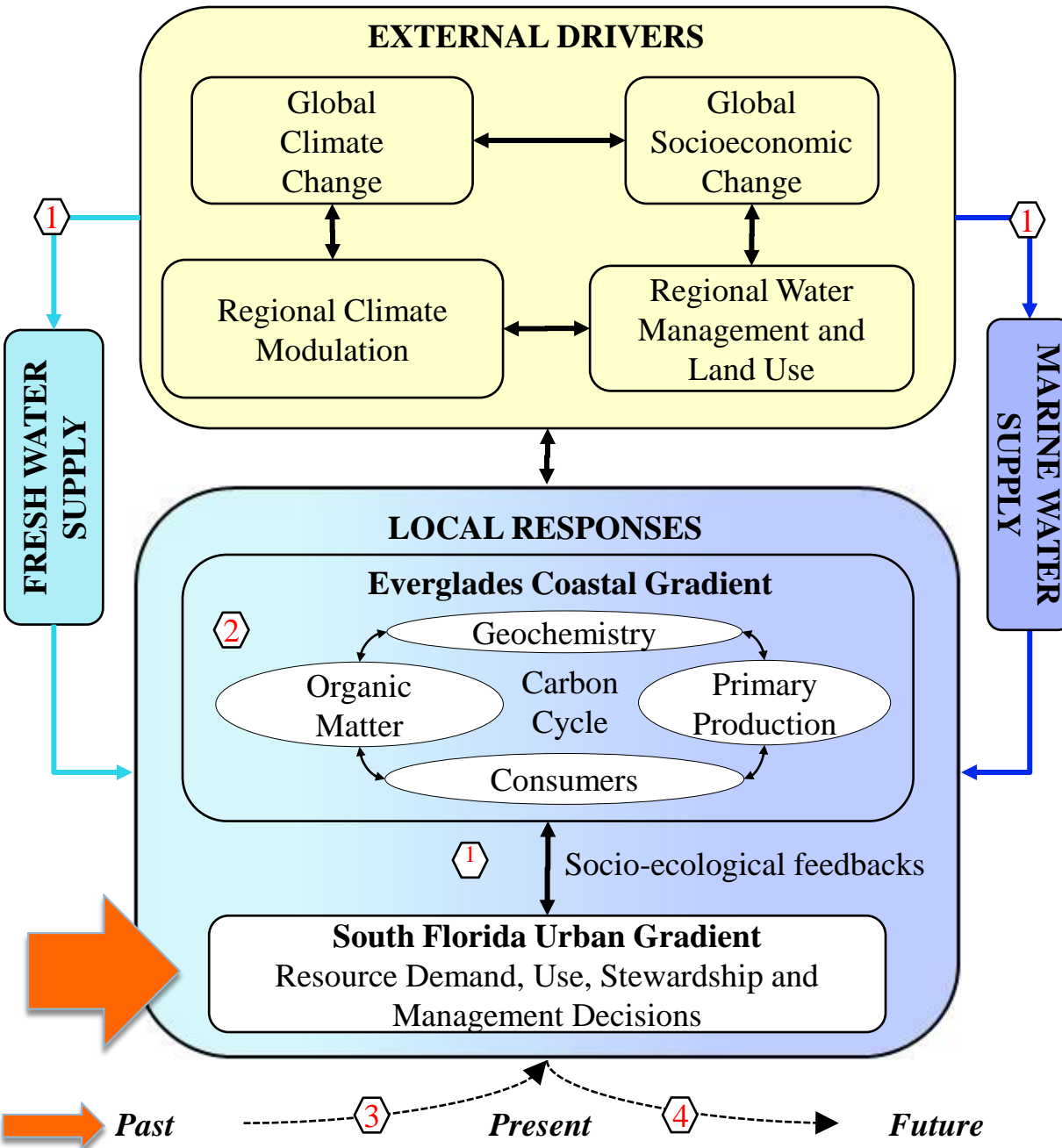
INTECOL/GEER CONFERENCE

Key Argument:

1. Understanding the ways different communities value, use and assign meaning to the Florida Everglades is essential to creating a more inclusive and less-conflict driven ecosystem restoration process.

Multi-Scaled Socio-Ecology of the Everglades

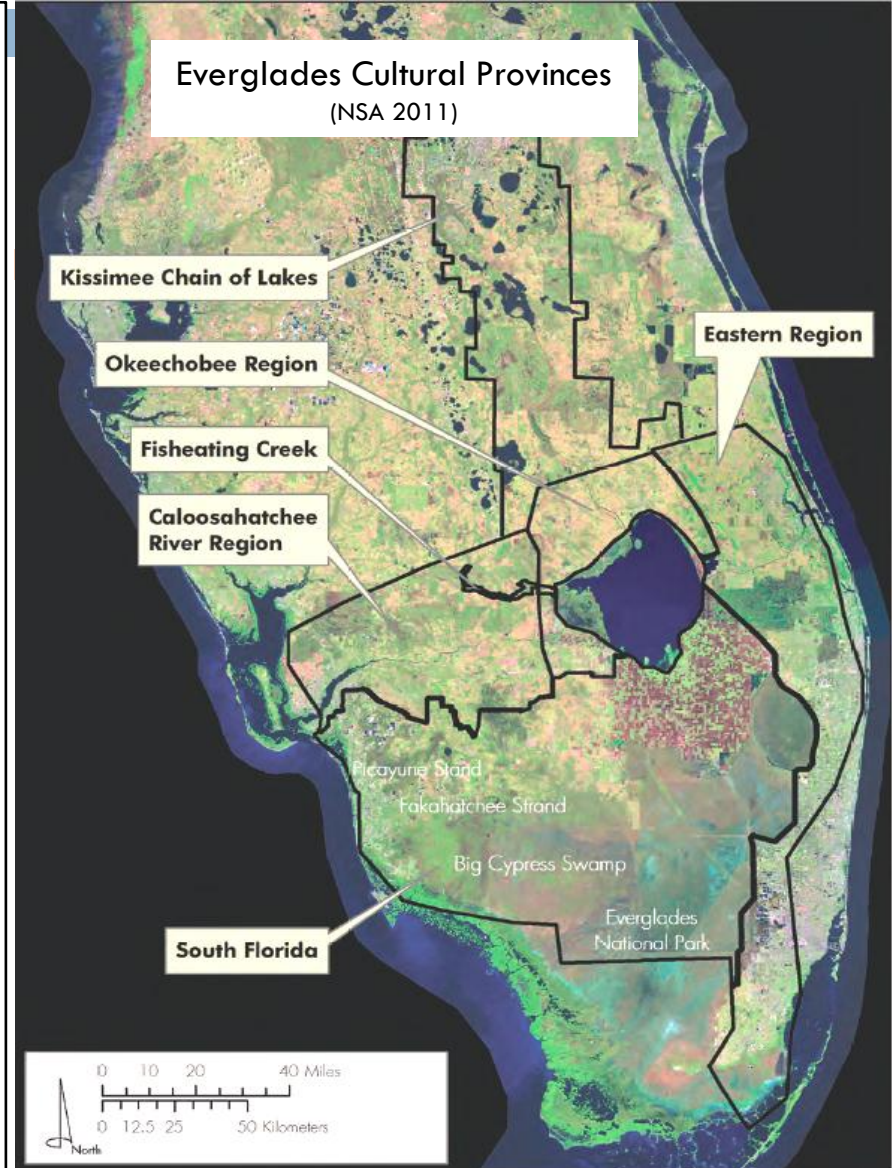
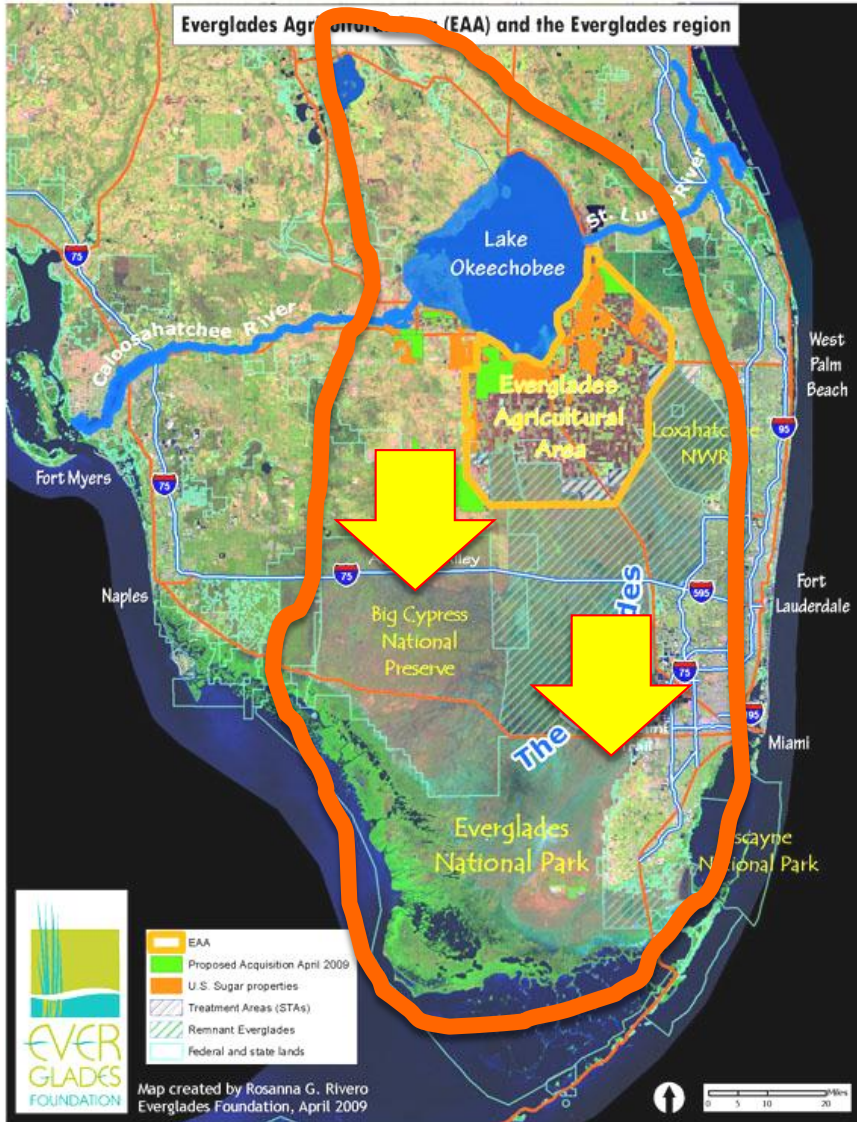
FCE III Conceptual Framework



FCE III LTER Goals:

- ① **Water** : How do water management decisions interact with climate change to determine freshwater distribution?
- ② **Carbon** : How does the balance of fresh and marine water supplies regulate C uptake, storage, and fluxes by influencing water residence time, nutrient availability, and salinity?
- ③ **Legacies** : How does historic variability in the relative supply of fresh and marine water modify ecosystem sensitivity to further change?
- ④ **Scenarios** : What are alternative socio-ecological futures for South Florida under contrasting climate change and water management scenarios?

The Florida Everglades is a unique ecosystem and cultural landscape



Documenting the Cultural in Everglades Restoration

- Method 1: **In-Depth Interviews, Participant Observation, Archival Research**
 - ▣ Documenting Everglades meanings and restoration visions among white outdoorsmen
- Method 2: **Social Survey**
 - ▣ Documenting Everglades meanings and restoration visions among environmentalists





The Everglades Backcountry is a Storied Cultural Landscape



Photos courtesy of ENP Archives (BICY 1466) and Franklin Adams

Backcountry Camp Stories



Photos courtesy of author



Navigating and Knowing the Backcountry



Photos courtesy of author

Historical Antecedents



Photos courtesy of Franklin Adams

The stories of white outdoorsmen make-up one part of a continuous human history that has shaped the Everglades landscape

Social Survey of Environmentalists



- FCE LTER research initiative designed to document what successful Everglades restoration means and looks like: <http://fcelter.fiu.edu/research/projects/>
- Designed in concert with Everglades scientists Dr. Laura Ogden, John C. Ogden and Dr. Tom Van Lent
- Survey distributed to 2011 Everglades Coalition
- Captured the perspectives of board members, staff members, citizens members and allies of a subset of the 50+ environmental organizations that make up the Everglades Coalition
- 91 responses received

Findings: Contrasting Visions of Everglades Restoration

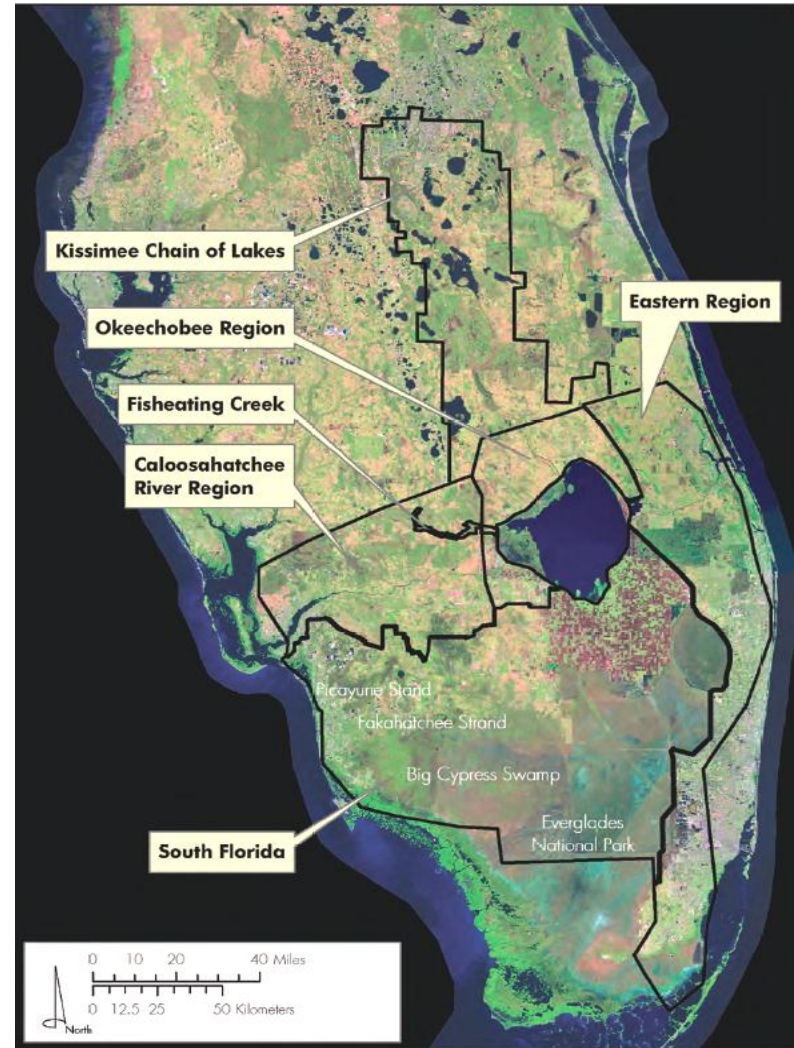


ENVIRONMENTALISTS



WHITE OUTDOORSMEN

Everglades Restoration: More Than Getting the Water Right

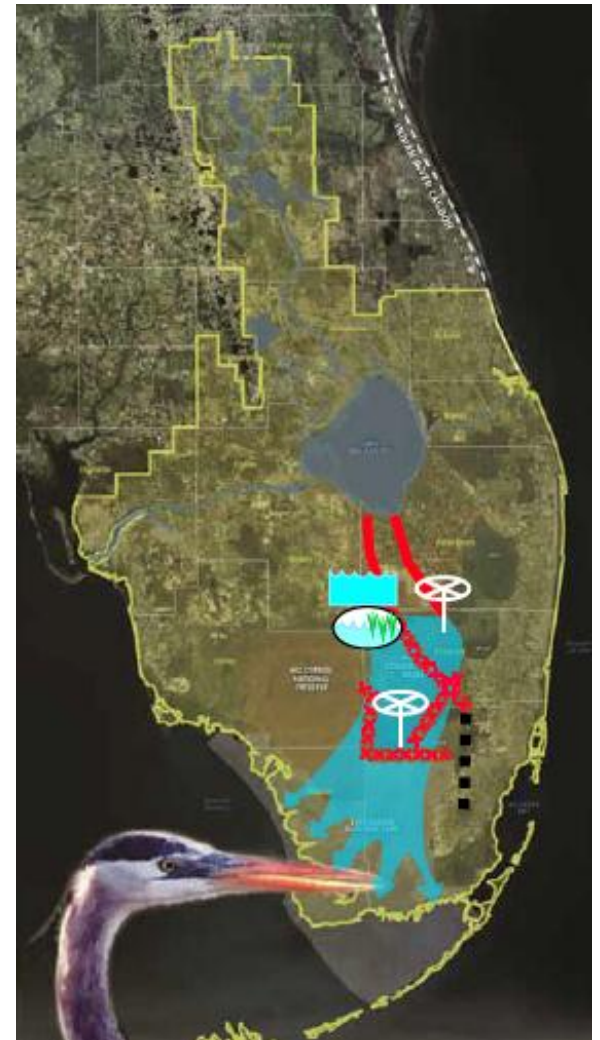


Looking to the Future: Central Everglades Planning Project

CENTRAL EVERGLADES PLANNING PROJECT



DECEMBER 14, 2011
PLANTATION, FLORIDA



Conclusion: Important Policy Applications of Anthropological Analysis

- Creates an **inclusive restoration process** that addresses the cultural significance of the Everglades and reduces conflict.
- Builds a **stronger restoration partnership**.
- Facilitates **better planning** that recognizes diverse landscape meanings, uses and histories.

Research Contribution(s): Advancing FCE Research Questions



Hydrology: Water Policy & Practices: How do climate change and SLR interact with water management practices to control hydrologic conditions in the oligohaline ecotone?



Scenarios & Modeling: What scenario of water distribution and climate change will maximize socio-economic and environmental sustainability of a future FCE?